

Systemverwaltung AIX 6.1/7

Rolf M Dietze

Aug-2008

Network Filesystem, NFS

Automounter, autoFS

Graphiken, Tabellen und Übersichten, mit freundlicher Genehmigung des Springer-Verlages aus: OpenSolaris für Anwender Administratoren und Rechenzentren, Dietze, Heuser, Schilling, März 2006.

LABs, Copyrighted: Rolf Dietze

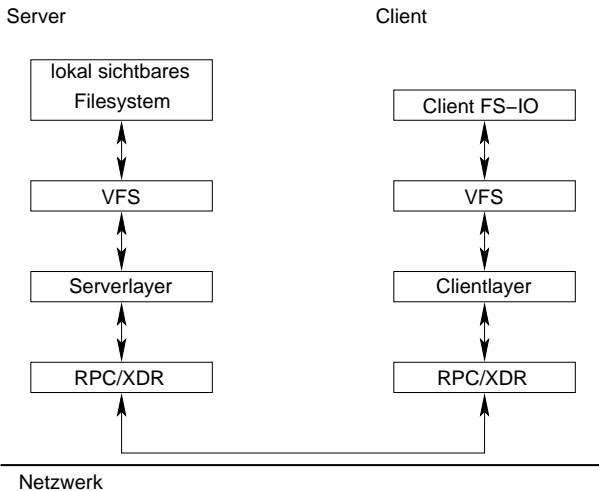
Einzelne Folien mit freundlicher Genehmigung des Springer-Verlages aus OpenSolaris für Anwender, Administratoren und Rechenzentren, 5/2008

Network Filesystem, NFS

Network Filesystem, NFS ¹

¹Nitemare Filesystem?

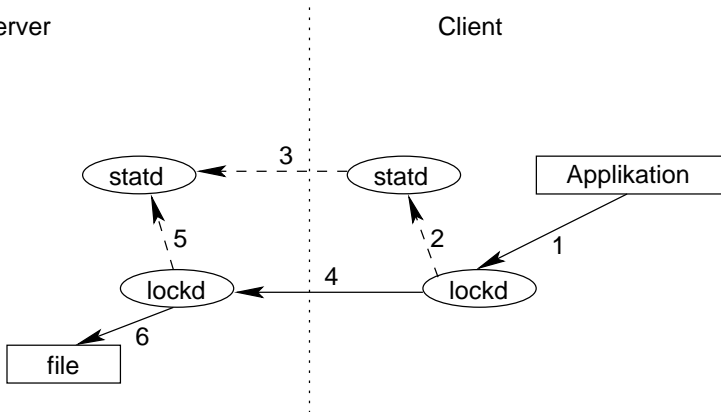
NFS



NFS (3)

Server

Client



NFS

```
root@hlp10:/$ lslpp -L |grep nfs
bos.net.nfs.adt      6.1.0.1 C F Network File System
bos.net.nfs.cachefs 6.1.0.1 C F CacheFS File System
bos.net.nfs.client  6.1.0.1 C F Network File System Client
bos.net.nfs.server  6.1.0.0 C F Network File System Server
```

NFS

```
root@hlp10:/$ lssrc -g nfs
```

Subsystem	Group	PID	Status
biod	nfs	4128908	active
rpc.statd	nfs	5308626	active
rpc.lockd	nfs	5570734	active
nfsd	nfs	2345623	active
rpc.mountd	nfs	5413456	active
nfsrgyd	nfs	5409542	active
gssd	nfs	5672342	active

NFS

smit nfs

NFS

Move cursor to desired item and press Enter.

Configure TCP/IP (If Not Already Configured)

Network File System (NFS)

Network Information Service (NIS)

Network Information Service Plus (NIS+)

Configure Secure NFS & NIS

Cache FS

Network Data Administration Facility (NDAF)

Proxy Server

F1=Help

F2=Refresh

F3=Cancel

F8=Image

F9=Shell

F10=Exit

Enter=Do

NFS

Network File System (NFS)

Move cursor to desired item and press Enter.

Configure NFS on This System

Add a Directory to Exports List

Change / Show Attributes of an Exported Directory

Remove a Directory from Exports List

Add a File System for Mounting

Change / Show Attributes of an NFS File System

Remove an NFS File System

Flush NFS V4 Translation Cache

Add NFSv4 File System FSID Options

Change / Show NFSv4 File System FSID Options

Reset NFSv4 File System FSID Options

F1=Help

F2=Refresh

F3=Cancel

F8=Image

F9=Shell

F10=Exit

Enter=Do

NFS

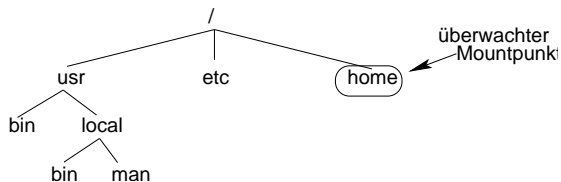
Mount: `mount <host>:<path> <targetpath>`

Unmount: `umount <targetpath>`

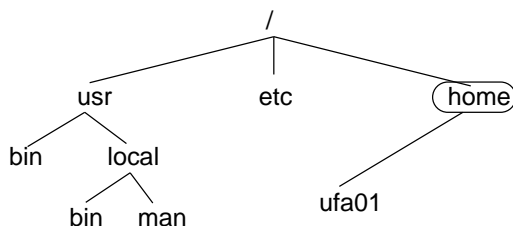
autoFS

Automounter

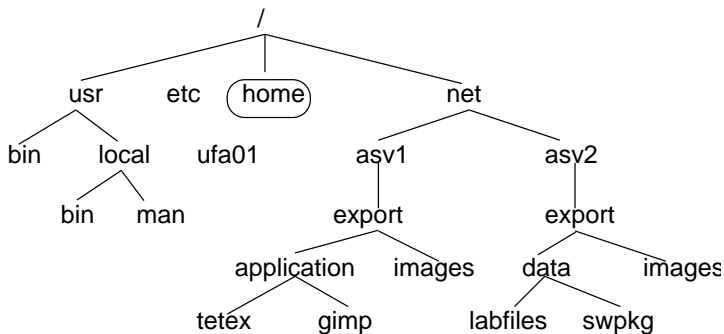
autoFS



autoFS



autoFS



autoFS

smit automount

Start Automounter

Type or select values in entry fields.

Press Enter AFTER making all desired changes.

[Entry Fields]

PARAMETERS to be used for the automount daemon []

F1=Help

F2=Refresh

F3=Cancel

F4=List

F5=Reset

F6=Command

F7=Edit

F8=Image

F9=Shell

F10=Exit

Enter=Do

autoFS, Setup AIX 6.1++

- ▶ Kopieren der Files unter `/usr/samples/nfs/auto*` nach `/etc`
- ▶ Anpassen der Automountermaps
- ▶ Mountpunkt `/home` freischalten (mount, `/etc/filesystems`)
- ▶ AutoFS starten: `/usr/sbin/automount`
alternativ `startsrc -s automountd`

- ▶ Check:

```
root@hlp10:/$ lssrc -s automountd
```

Subsystem	Group	PID	Status
automountd	autofs	159956	active

- ▶ AutoFS stoppen: `stopsrc -s automountd`

autoFS, /etc/auto_master

Allgemeines Format einer Automountermap:

```
key    -Mountoptions    nfs-Server:Serverpath  Options
```

Master-Map:

```
#  
# Master map for automounter  
#  
+auto_master  
/net          -hosts          -nosuid,nobrowse  
/home        auto_home       -nobrowse
```

autoFS, /etc/auto_home

```
#  
# Home directory map for automounter  
#  
+auto_home  
svw01 arietis:/export/home/svw01  
svw02 arietis:/export/home/svw02  
svw03 arietis:/export/home/svw03  
svw04 arietis:/export/home/svw04  
svw05 arietis:/export/home/svw05
```

Vereinfachung:

```
* arietis:/export/home/&
```