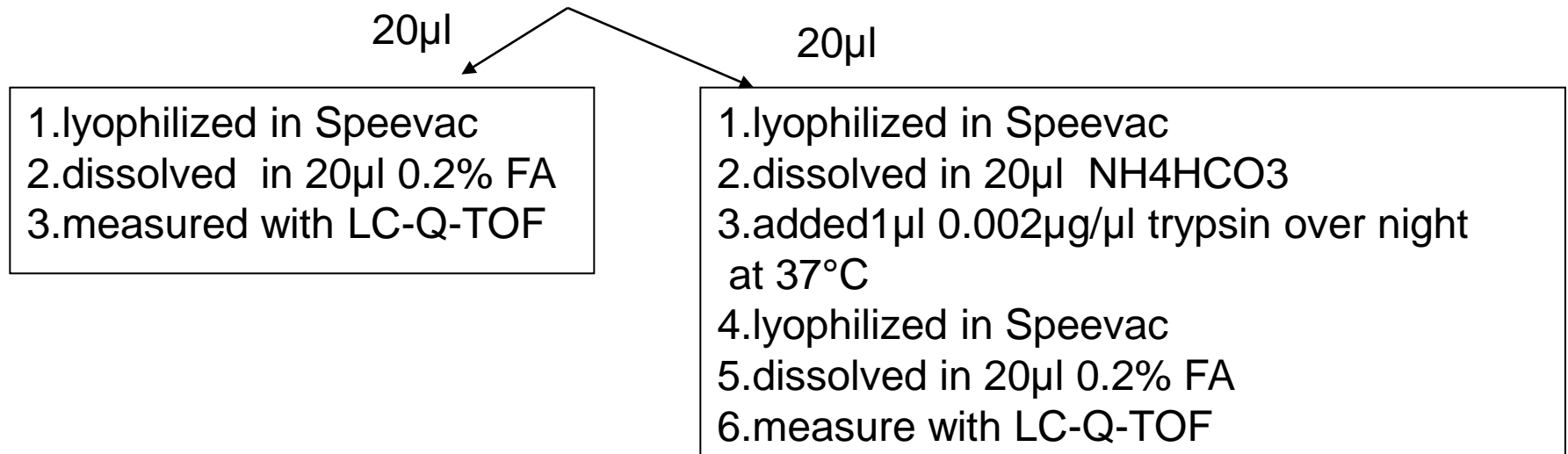


Experiment:

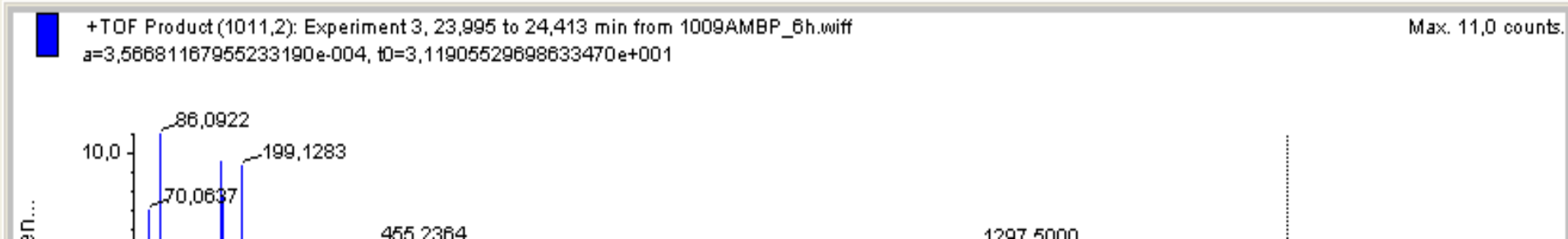
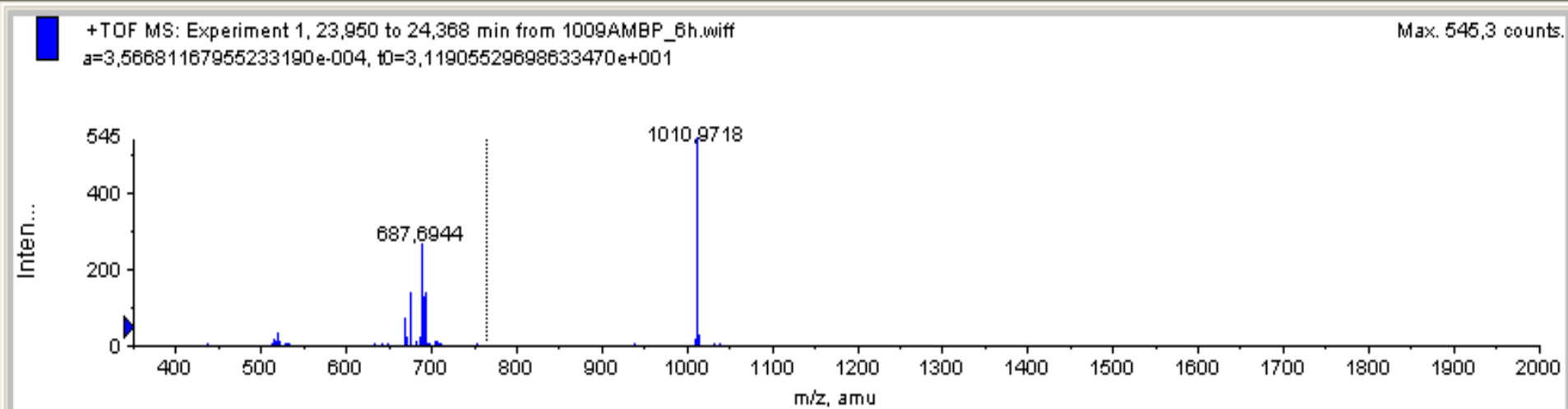
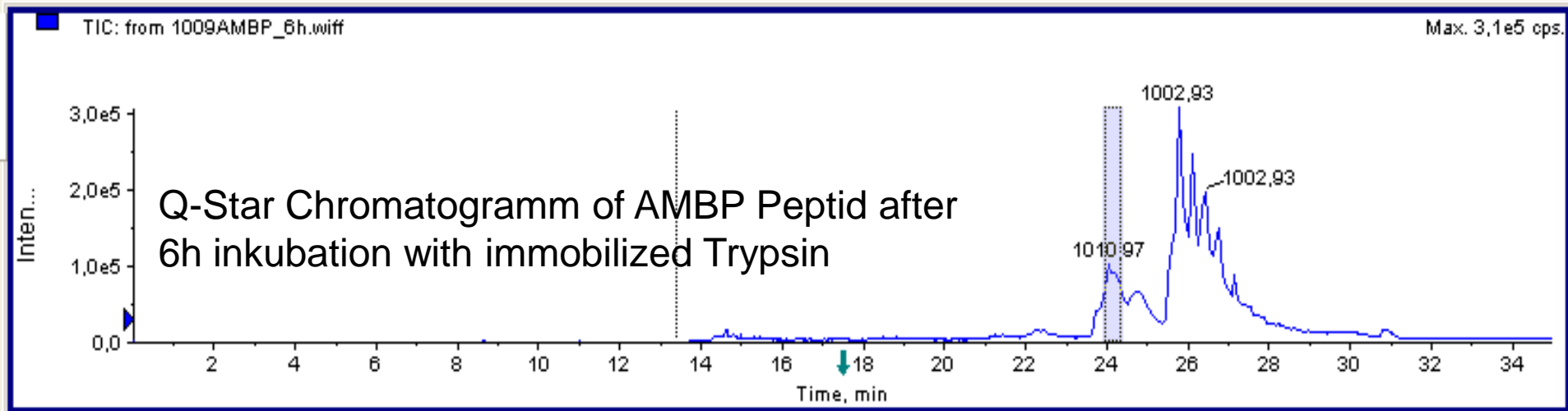
1. AMBP peptide (AKLYGRAPQLRETLQDFRVVAQGVGIPEDSIFTMADR) was incubated with immobilized trypsin, the 6h incubate was analysed with LC-Q-TOF

2. An urine fraction with a big peptide (2752.4856 Da)

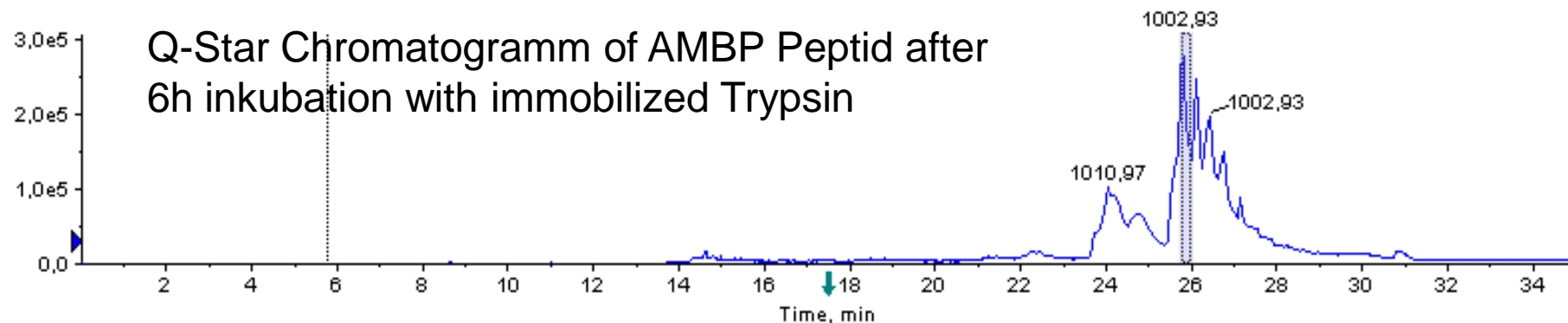


3. the data was to Mascot sended

Results

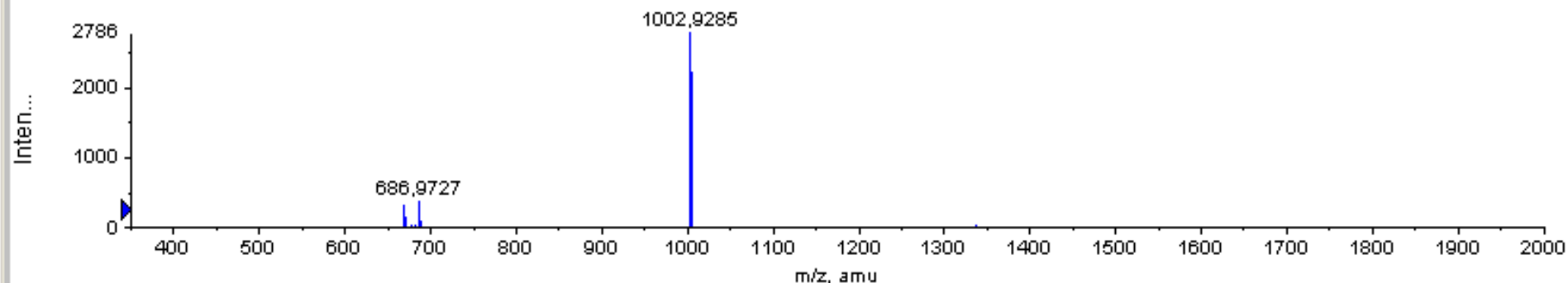


Q-Star Chromatogramm of AMBP Peptid after 6h inkubation with immobilized Trypsin



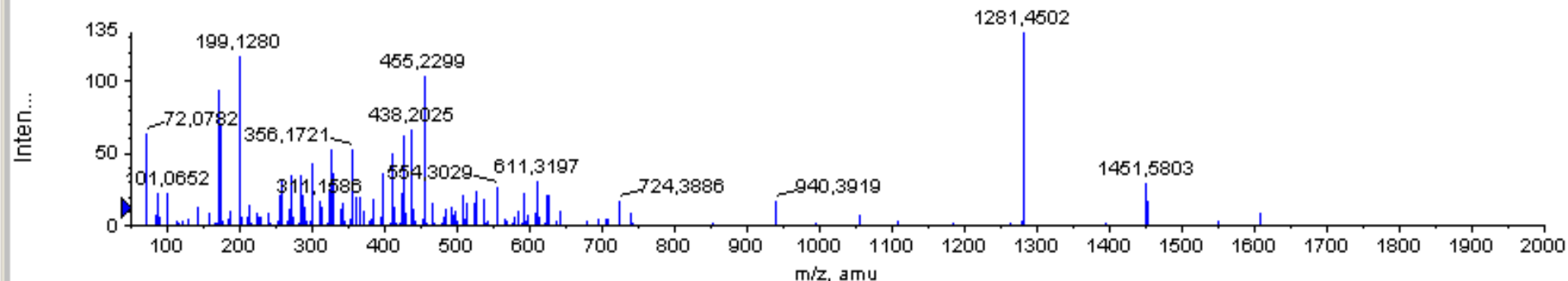
+TOF MS: Experiment 1, 25,767 to 26,018 min from 1009AMBP_6h.wiff
 $a=3,56681167955233190e-004$, $t_0=3,11905529698633470e+001$

Max. 2785,5 counts.



+TOF Product (1002,9): Experiment 2, 25,789 to 26,040 min from 1009AMBP_6h.wiff
 $a=3,56681167955233190e-004$, $t_0=3,11905529698633470e+001$

Max. 134,5 counts.



With Mascot the peptide was identified

[AMBP_HUMAN](#) Mass: 38974 Score: 282 Mat
ches: 46(8) Sequences: 4(1) emPAI: 0.18

Protein AMBP OS=Homo sapiens GN=AMBP PE=1
SV=1

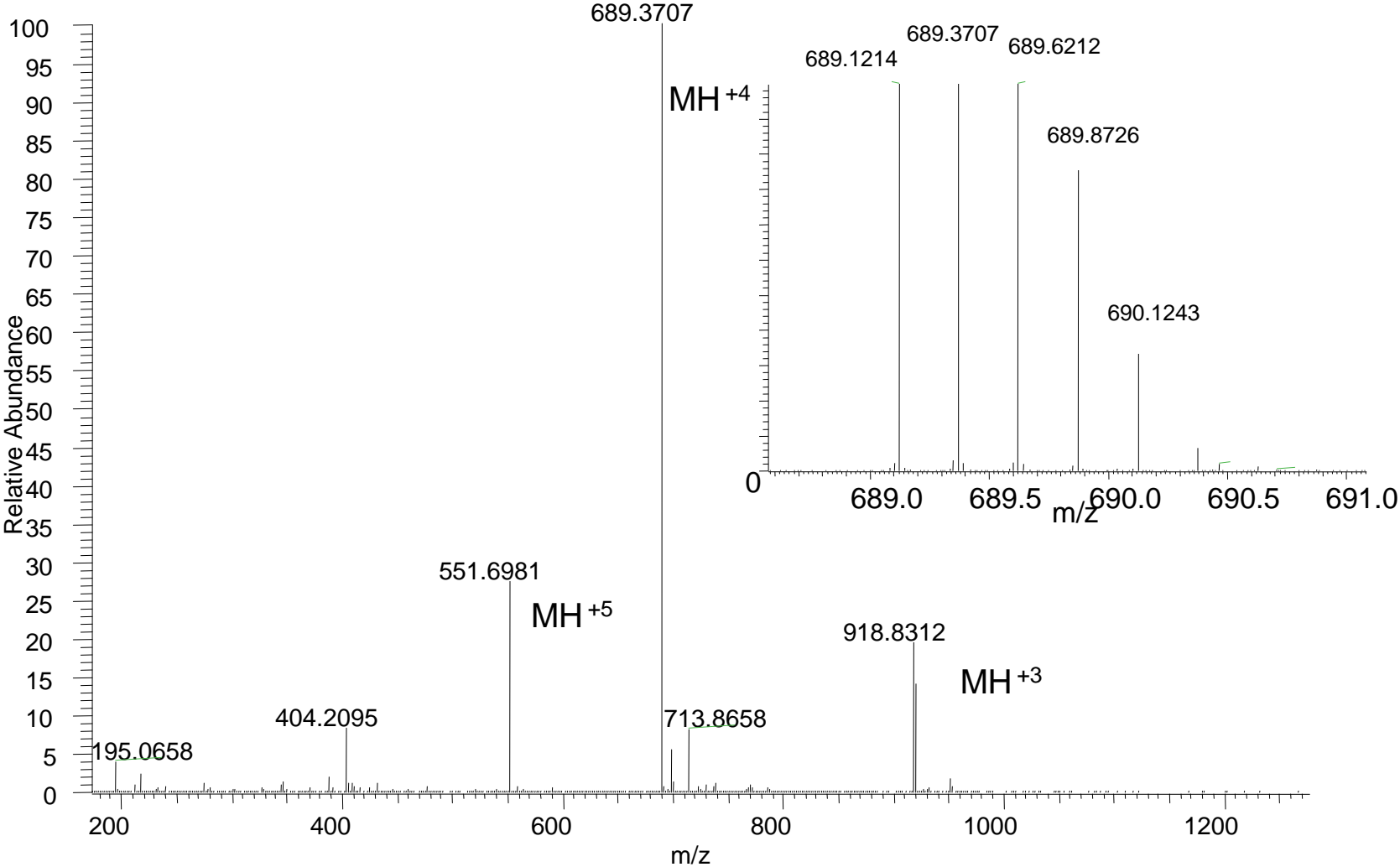
[M+2H]²⁺ (m/z =2):

1010.9987 R.VVAQGVGIPEDSIFTMADR.G

1002.9932 R.VVAQGVGIPEDSIFTMADR.G

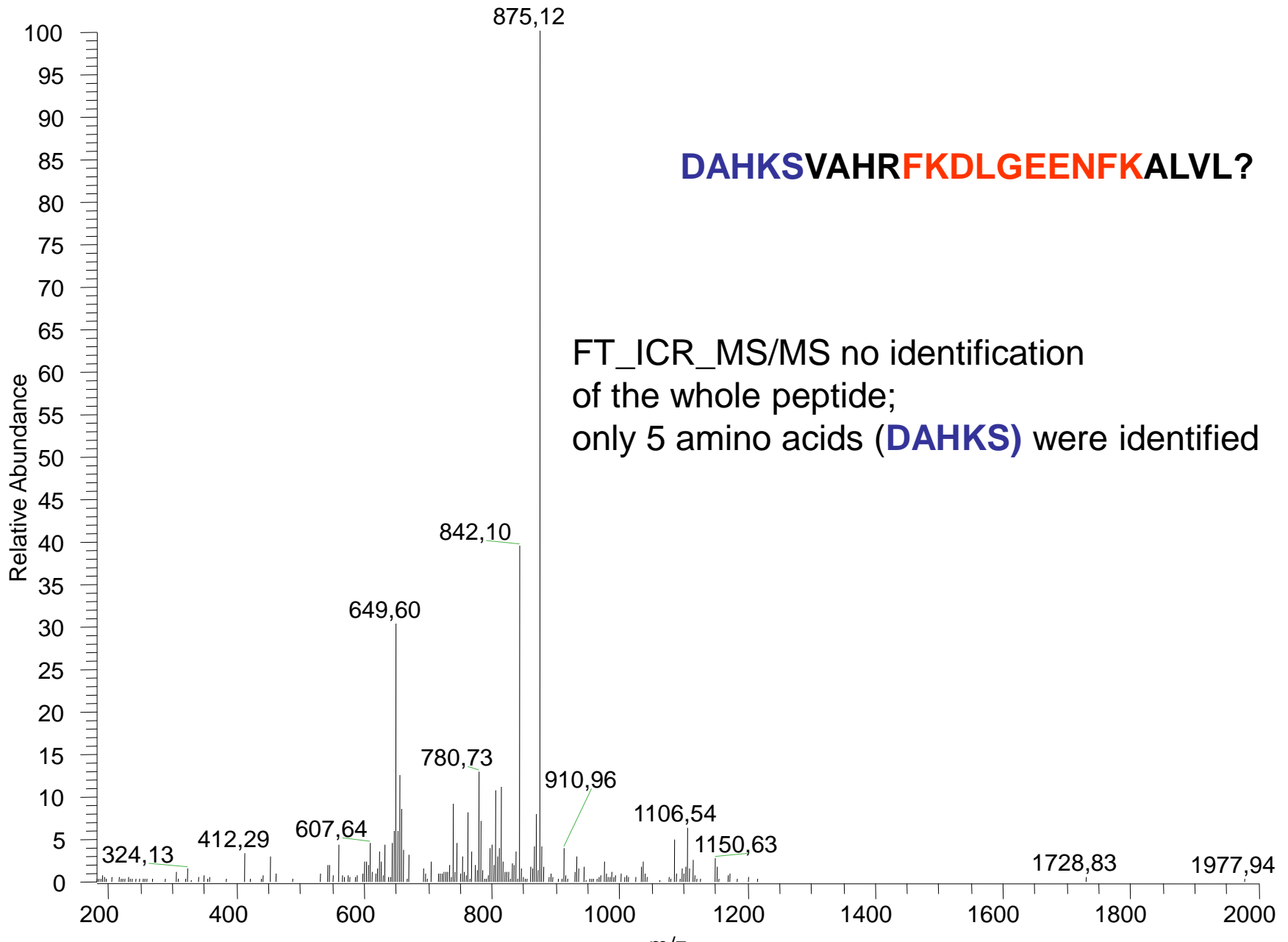
Big peptid (2752.4856 Da) from a urine peptide fraction

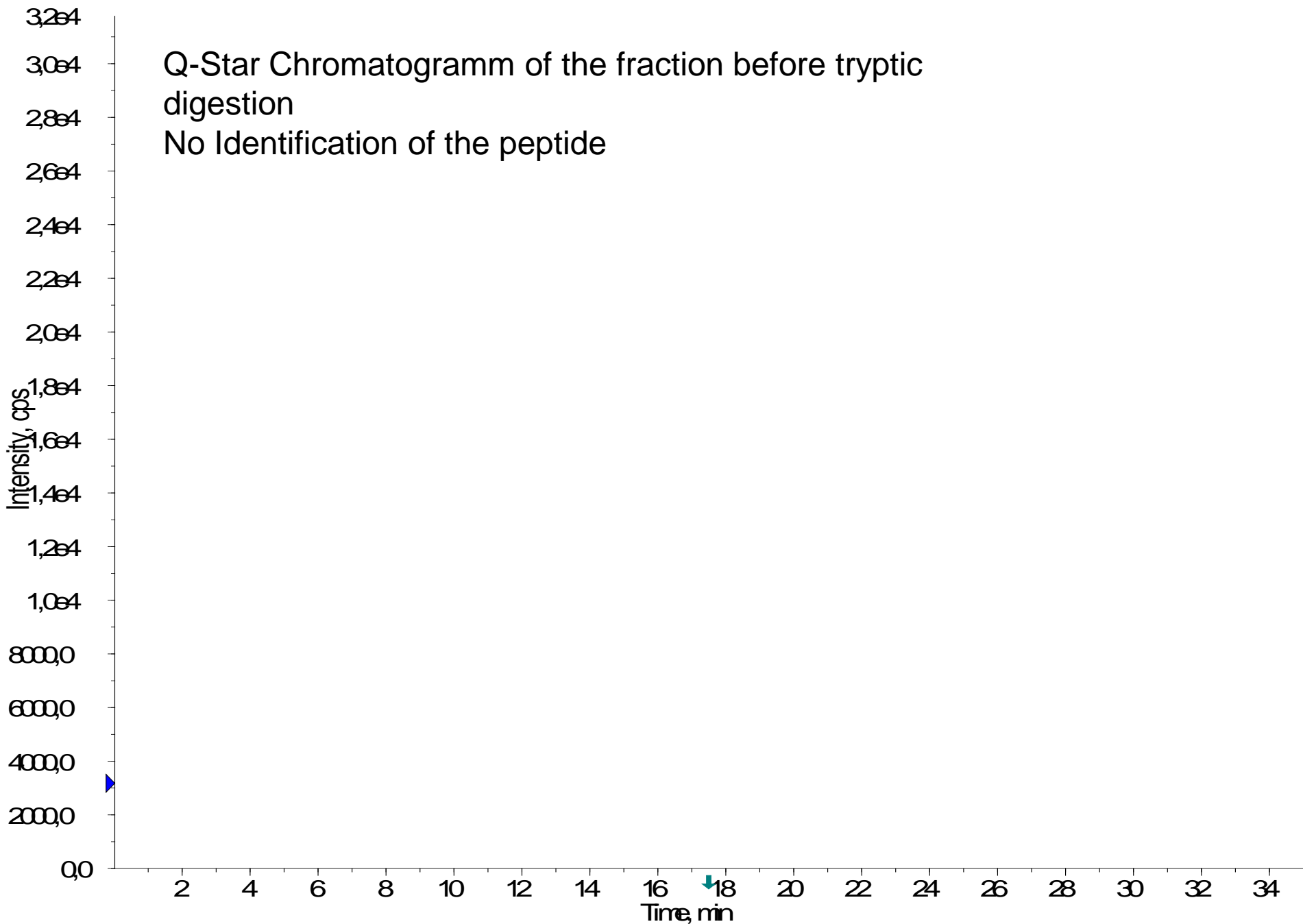
FT_ICR_MS



DAHKSVAHRFKDLGEENFKALVL?

FT_ICR_MS/MS no identification
of the whole peptide;
only 5 amino acids (**DAHKS**) were identified

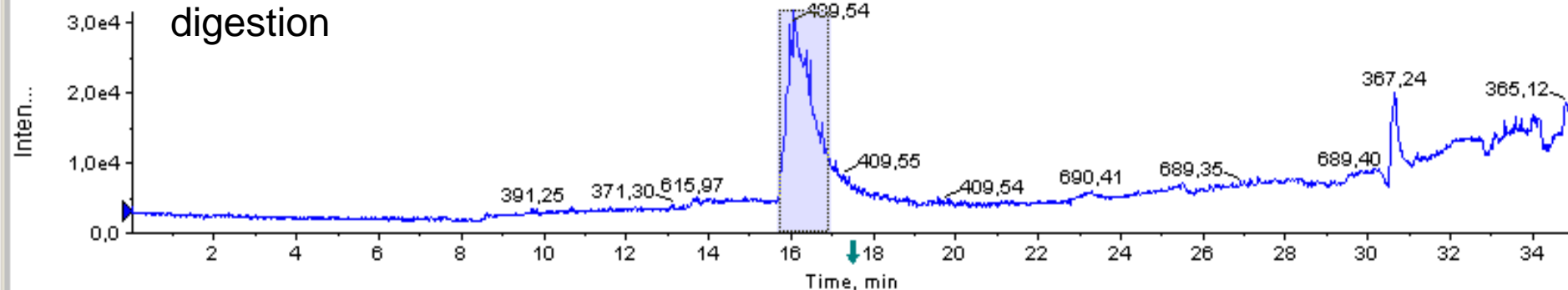




TIC: from 1009nachVRC5_19.wiff

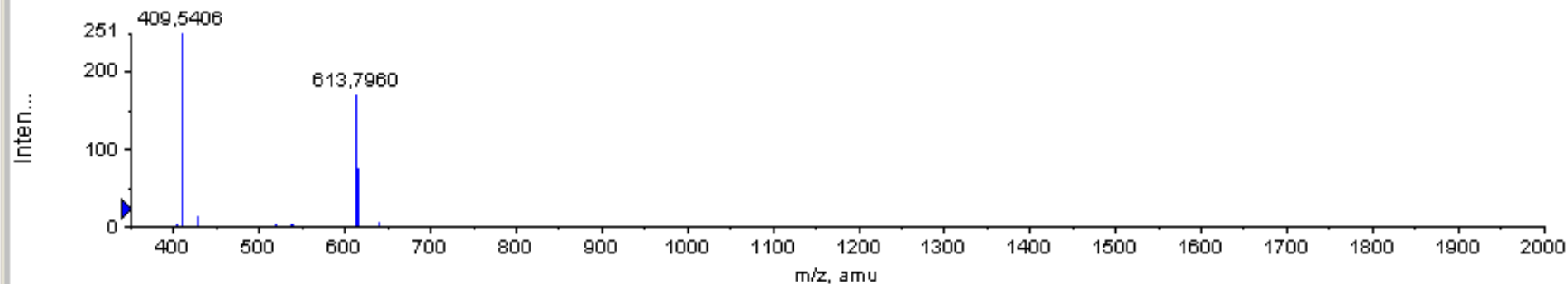
Max. 3,2e4 cps.

Q-Star Chromatogramm of the fraction after tryptic digestion



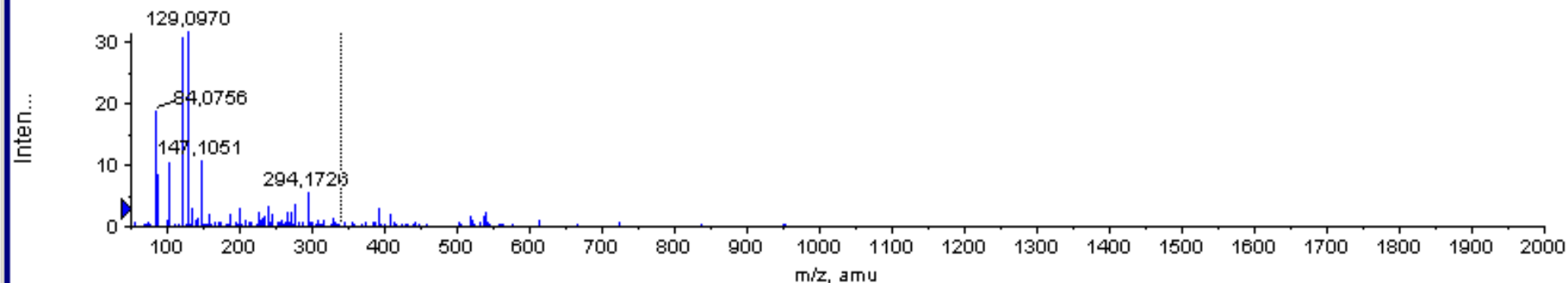
+TOF MS: Experiment 1, 15,711 to 16,948 min from 1009nachVRC5_19.wiff
a=3,56681167955233190e-004, t0=3,11905529698633470e+001

Max. 251,4 counts.



+TOF Product (613,8): Experiment 2, 15,733 to 16,952 min from 1009nachVRC5_19.wiff
a=3,56681167955233190e-004, t0=3,11905529698633470e+001

Max. 31,8 counts.



With Mascot the Peptid was Identified

[ALBU HUMAN](#) Mass: 69321 Score: 93 Matches: 17(3) Sequences: 2(1)

Serum albumin OS=Homo sapiens GN=ALB PE=1 SV=2

613.7761 MH2+

R.FKDLGEENFK.A

409.5385 MH3+

R.FKDLGEENFK.A

tryptic peptide

DAHKSVAHR**FKDLGEENFK**ALVL

Summary:

- AMBP peptide was incubated with trypsin, the inkubate was analysed with LC-Q-TOF
- **With Mascot the peptide was identified**
- A urine fraction with a peptide (2752.4856 Da) was inkubated with trypsin, that could not identified with FT-ICR-MS/MS.
- **After tryptic digestion with Mascot the peptide was identified.**