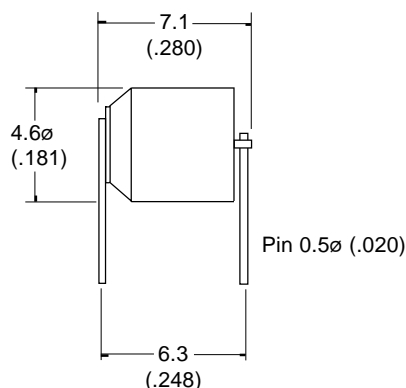


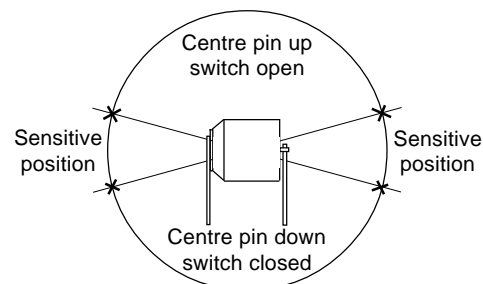
## Comus Group of Companies

## PRODUCT DATA SHEET



Drawings not to scale  
All dimensions in mm (inches) nominal

## CONTACT FORM / STYLE



Contact Form/Style: Switch types CM1800 may have a normally open or closed contact depending on the positioning of the switch. These switches have a change in sensitivity depending on the switch position.

## SPECIFICATION

|                       |                         |                                |
|-----------------------|-------------------------|--------------------------------|
| CONTACT FORM/STYLE    |                         | See above                      |
| SWITCHING VOLTAGE     | Max. Vac                | 120                            |
| SWITCHING CURRENT     | Max. A                  | 0.1                            |
| SWITCHING CAPACITY    | Max. VA                 | 3                              |
| CONTACT RESISTANCE    | Max. $\Omega$           | 5                              |
| OPERATING TEMPERATURE | Deg. $^{\circ}\text{C}$ | -37 $^{\circ}$ +100 $^{\circ}$ |
| STORAGE TEMPERATURE   | Deg. $^{\circ}\text{C}$ | -40 $^{\circ}$ +125 $^{\circ}$ |
| CASE MATERIAL         |                         | Steel-tin plated               |
| CABLE/TERMINATION     |                         | Pin                            |
| FEATURES              |                         | Compact                        |

NOTE: When cutting or bending switch leads it is important that the glass seal is not damaged. The cutting or bending point should be no closer than 3mm (.118) to the glass to metal seal and the lead should be supported between the cutting or bending point and the glass to metal seal.

These switches contain toxic material and should not be opened.

### MOVEMENT / VIBRATION SWITCH

#### Mercury Contacts

PART NUMBER  
**CM 1800-1**

| Rev. No. | Revision Note | Date   | Signature |
|----------|---------------|--------|-----------|
| D        | Web Site 2001 | 1-2-01 | RG        |

The Comus Group of Companies consist of:  
Assemtech Europe Limited  
E. Bachem GmbH  
Comus International  
W. Gunther GmbH  
Gunther Belgium  
Gunther France  
S.T.G.

As part of the company policy of continued product improvement, specifications may change without notice. Our sales office will be pleased to help you with the latest information on this product range and details of our full design and manufacturing service. All products are supplied to our standard conditions of sale otherwise agreed in writing.