



Unit 6

Web-based System Manager



Unit objectives

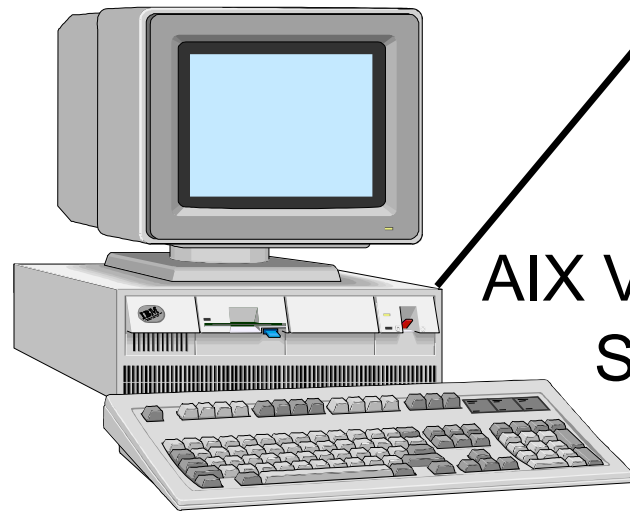
After completing this unit, you should be able to:

- Use the Web-based System Manager to manage AIX
- Install and configure the Web-based System Manager

Web-based System Manager



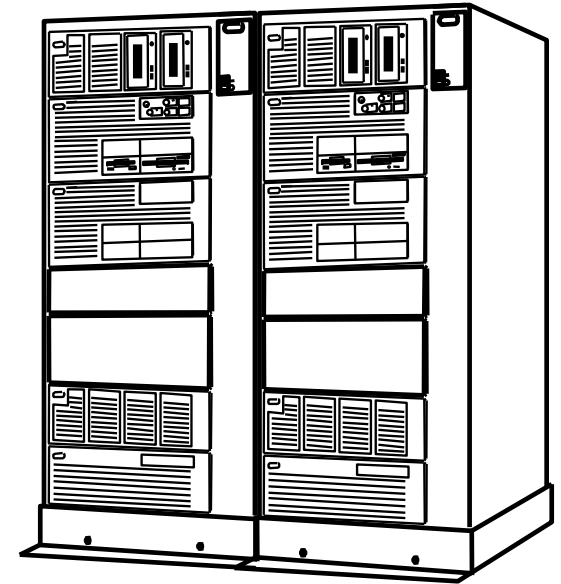
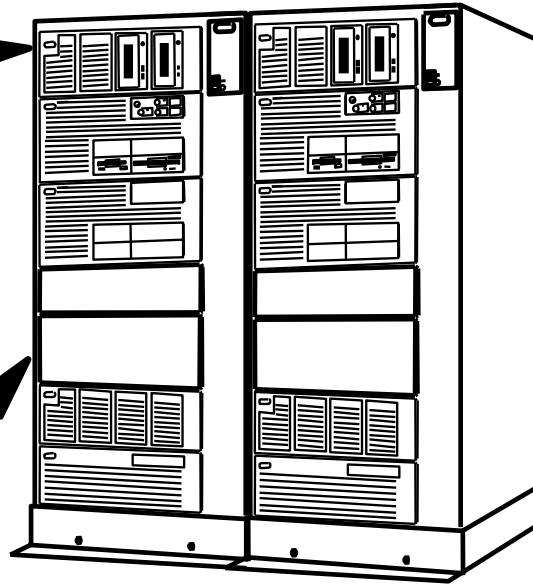
PC or Linux
Remote Client



Client-Server

AIX Version 6.1
System

AIX Version 6.1 System

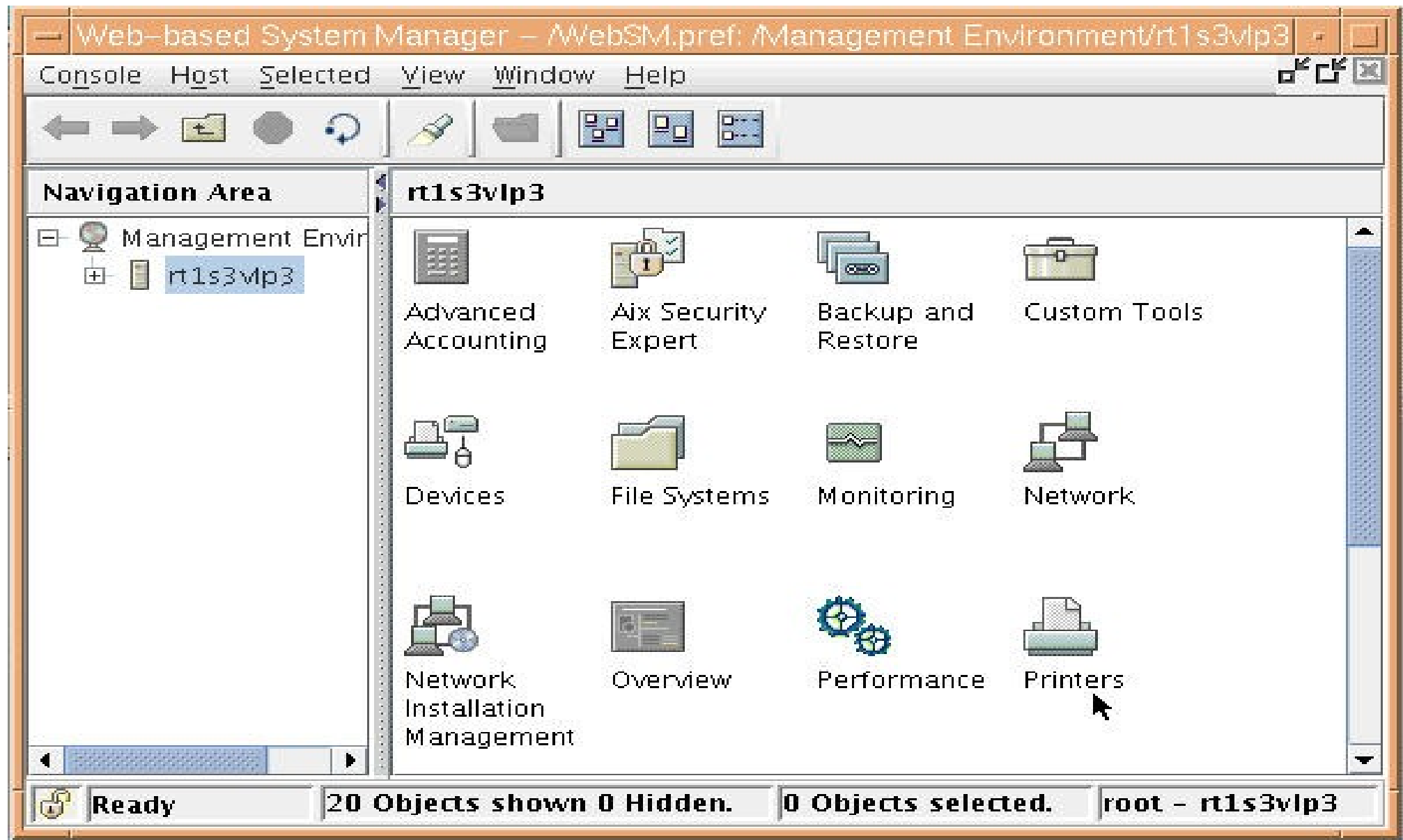


AIX Version 6.1 System
Stand-alone
Web-based
System Manager

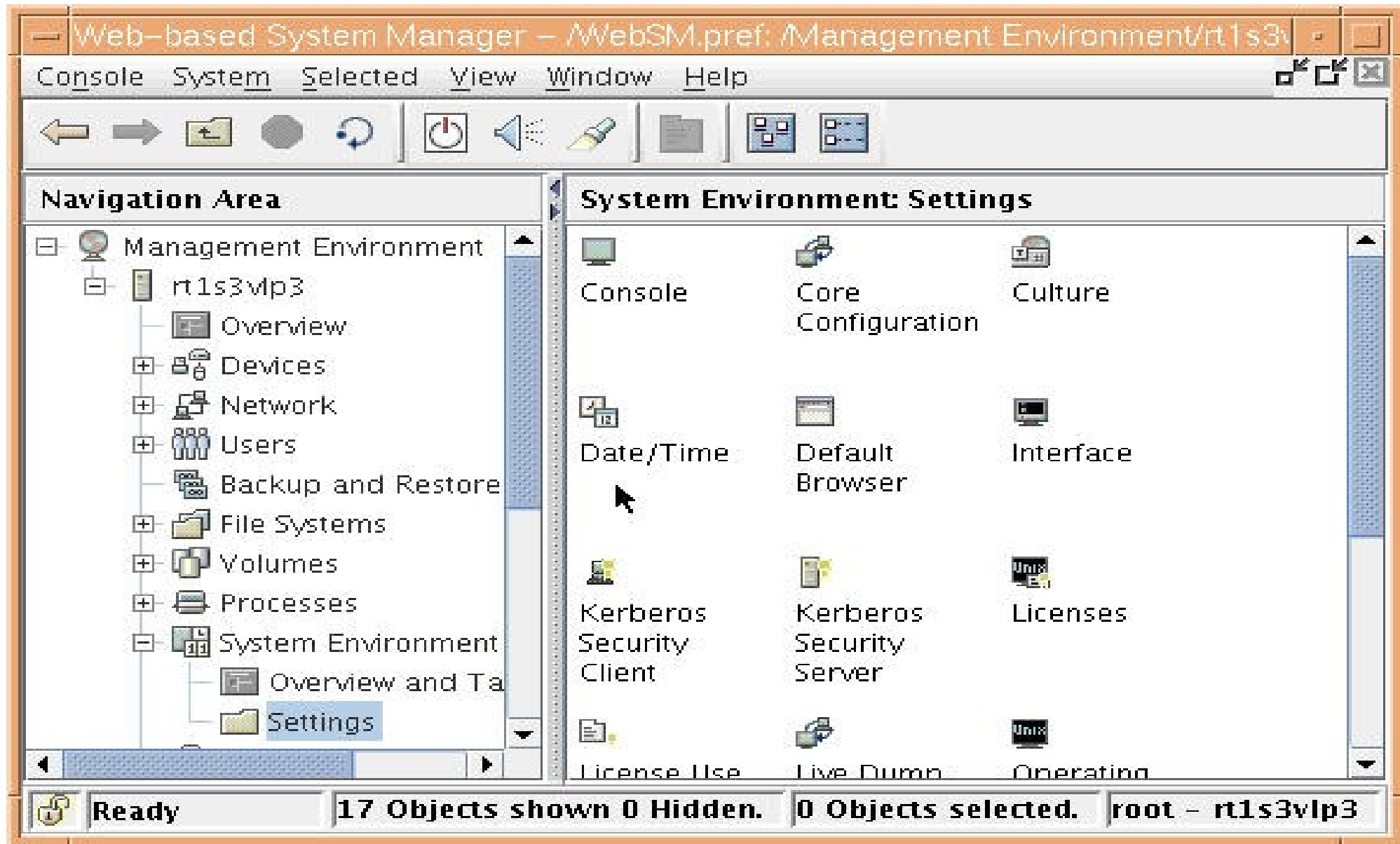
Accessing the Web-based System Manager

- Stand-alone mode:
 # **wsm**
- Client-server mode:
 - From the AIX 6.1 client:
 # **wsm -host <managed-host>**
- Remote client mode:
 - From Windows or Linux desktop:
 - Double-click the Web-based System Manager
 - Remote Client icon

Using the Web-based System Manager (1 of 3)



Using the Web-based System Manager (2 of 3)




Using the Web-based System Manager (3 of 3)

Date/Time @ rt1s3vlp3

Date and Time

System Defined Time Zone

User Defined Time Zone

 Any changes made to the timezone will take effect at the next system boot.

Date:

November

25

2007

Time:

1

04

20

☐ AM ☒ PM


☐ Change time zone using system defined values

☐ Change time zone using user defined values

make a change in those fields.

OK

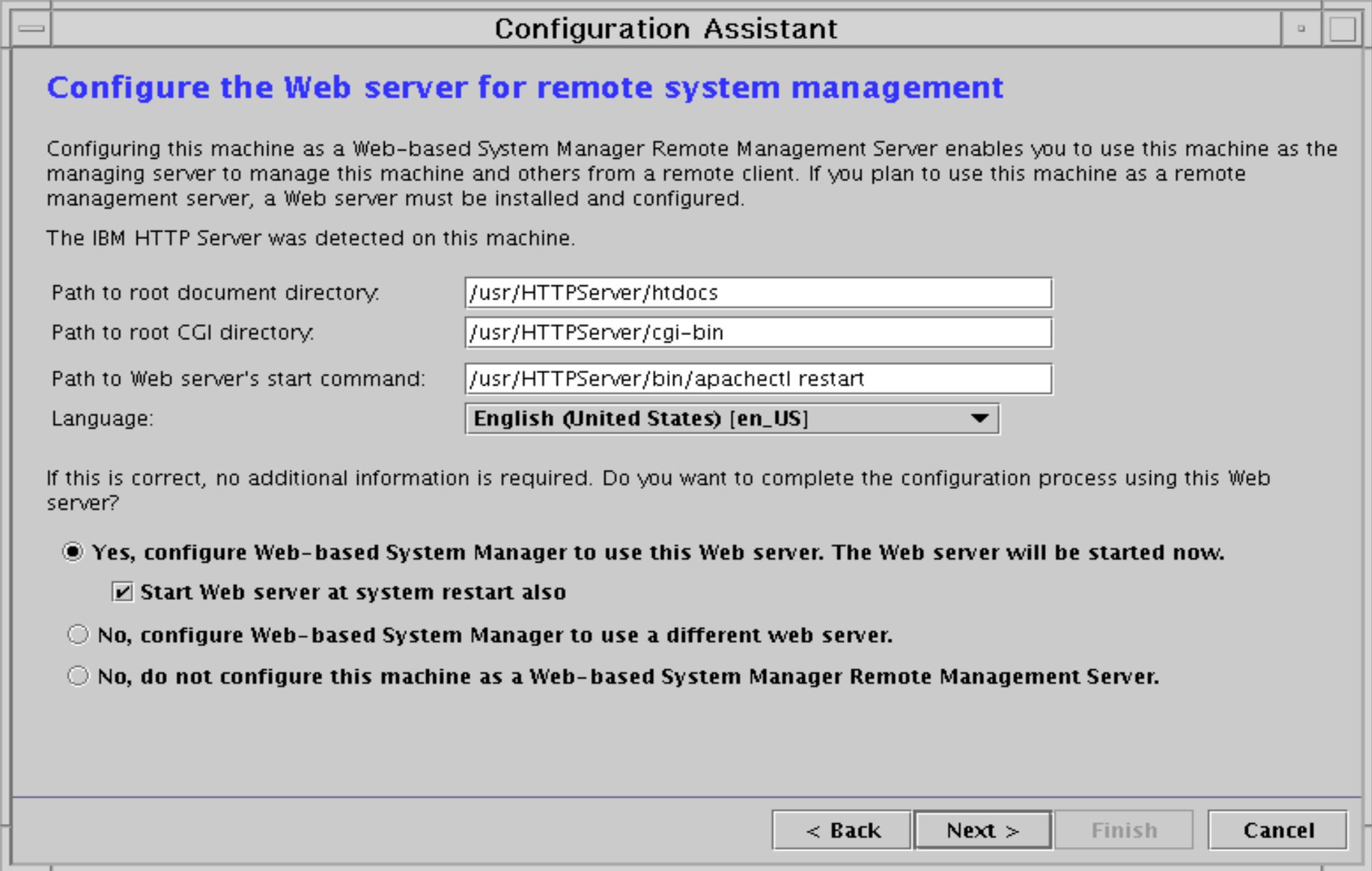
Cancel

 Help

Installation for a remote client

- Install the Web-based System Manager (usually done by default with the base)
- Install an HTTP server:
 - IBM HTTP Server (IHS2) on AIX Version 6.1 Expansion Pack
- Configure the HTTP server (more detail on the next visual)
 - **configassist**
- Test the HTTP server with a browser
- Enable the Web-based System Manager server:
/usr/websm/bin/wsmserver -enable
- Install the Web-based System Manager client on Windows or Linux platforms (more detail coming up)

Configure the HTTP (Web) server



Configuration Assistant

Configure the Web server for remote system management

Configuring this machine as a Web-based System Manager Remote Management Server enables you to use this machine as the managing server to manage this machine and others from a remote client. If you plan to use this machine as a remote management server, a Web server must be installed and configured.

The IBM HTTP Server was detected on this machine.

Path to root document directory:

Path to root CGI directory:

Path to Web server's start command:

Language:

If this is correct, no additional information is required. Do you want to complete the configuration process using this Web server?

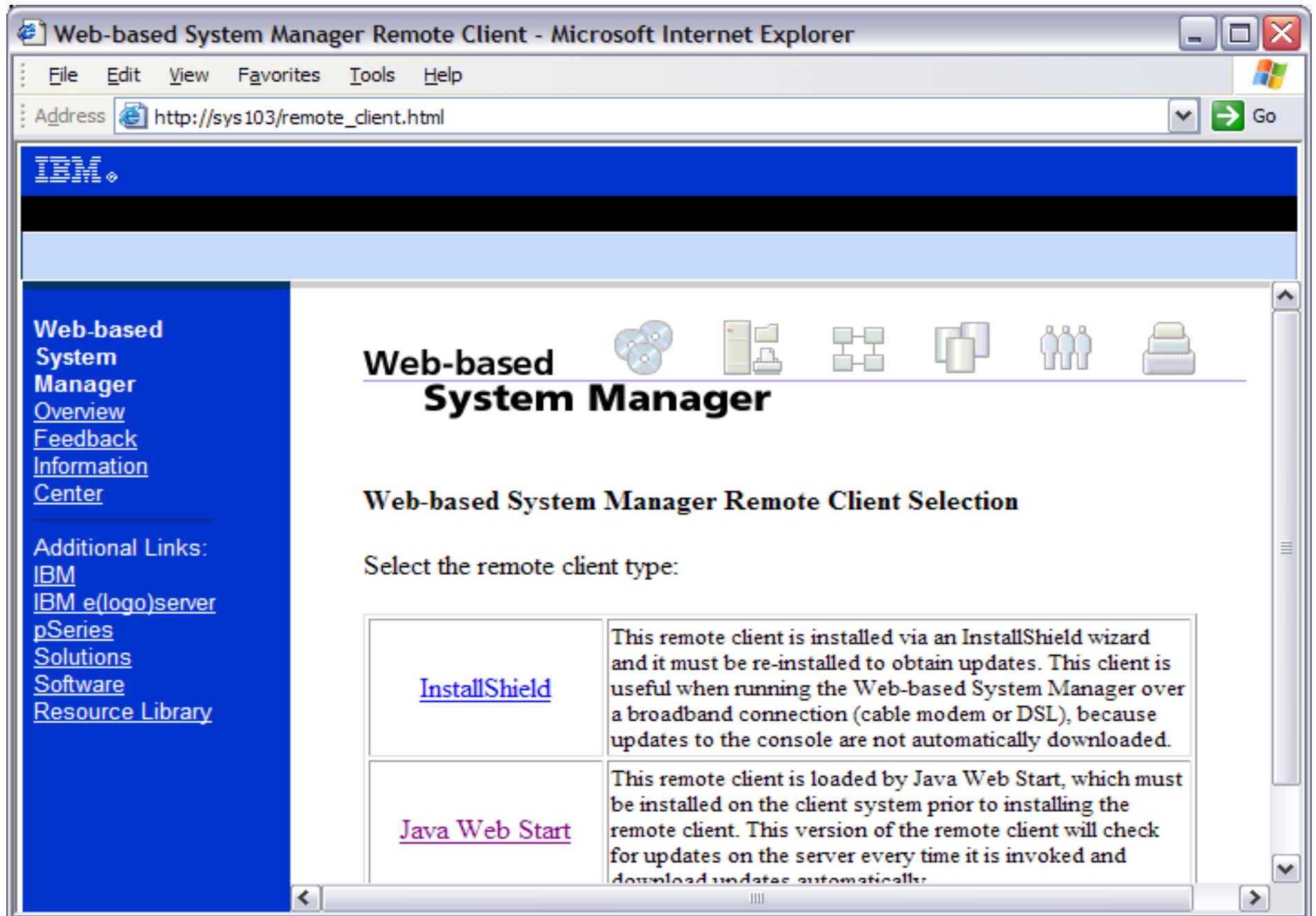
☒ **Yes, configure Web-based System Manager to use this Web server. The Web server will be started now.**

☒ **Start Web server at system restart also**

☐ **No, configure Web-based System Manager to use a different web server.**

☐ **No, do not configure this machine as a Web-based System Manager Remote Management Server.**

Remote client installation



Checkpoint

1. True or False? The Web-based System Manager is available for client access automatically after the BOS is installed.

2. Which of the statements are true regarding the Web-based System Manager?
 - a) An AIX V6.1 system can be managed from a remote PC with appropriate Java and Web browser code installed.
 - b) In stand-alone mode, use the `wsm` command to access the Web-based system manager.
 - c) It is possible to manage an AIX V6.1 system from a remote AIX V6.1 system using an ASCII terminal.

Checkpoint solutions

- True or False? The Web-based System Manager is available for client access automatically after the BOS is installed.

False. The Web-based System Manager server must be configured and enabled for client access.

2. Which of the statements are true regarding the Web-based System Manager?

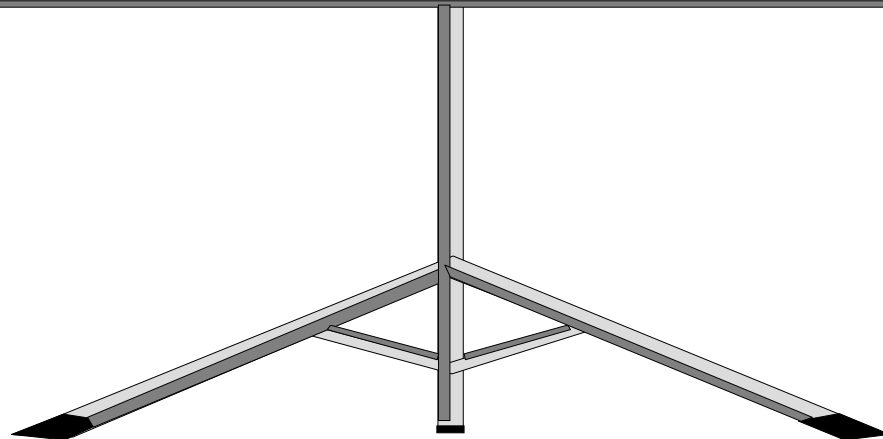
- a) An AIX V6.1 system can be managed from a remote PC with appropriate Java and Web browser code installed.
- b) In stand-alone mode, use the `wsm` command to access the Web-based system manager.
- c) It is possible to manage an AIX V6.1 system from a remote AIX V6.1 system using an ASCII terminal.

C is false. However, with a graphics terminal it is possible to manage different systems simultaneously by adding the remote systems in the Navigation window of Web-based System Manager.

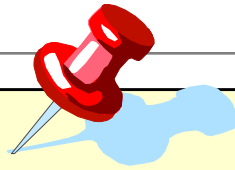
Exercise 6: Web-based System Manager



- Use the Web-based System Manager
- Configure the Web-based System Manager for AIX client access (optional)
- Configure the Web-based System Manager for remote client access (optional)
- Configure the Web-based System Manager for client access applet mode (optional)



Unit summary



- The Web-based System Manager supports system administration tasks in a stand-alone or client-server environment.
- The Web-based System Manager can be used either locally or remotely from either another Web-based System Manager installed AIX platform or a PC with the Web-based System Manager application.
- Remote access may be enabled or disabled.