



## **Unit 2**

# **System Management Interface Tool (SMIT)**



# Unit objectives

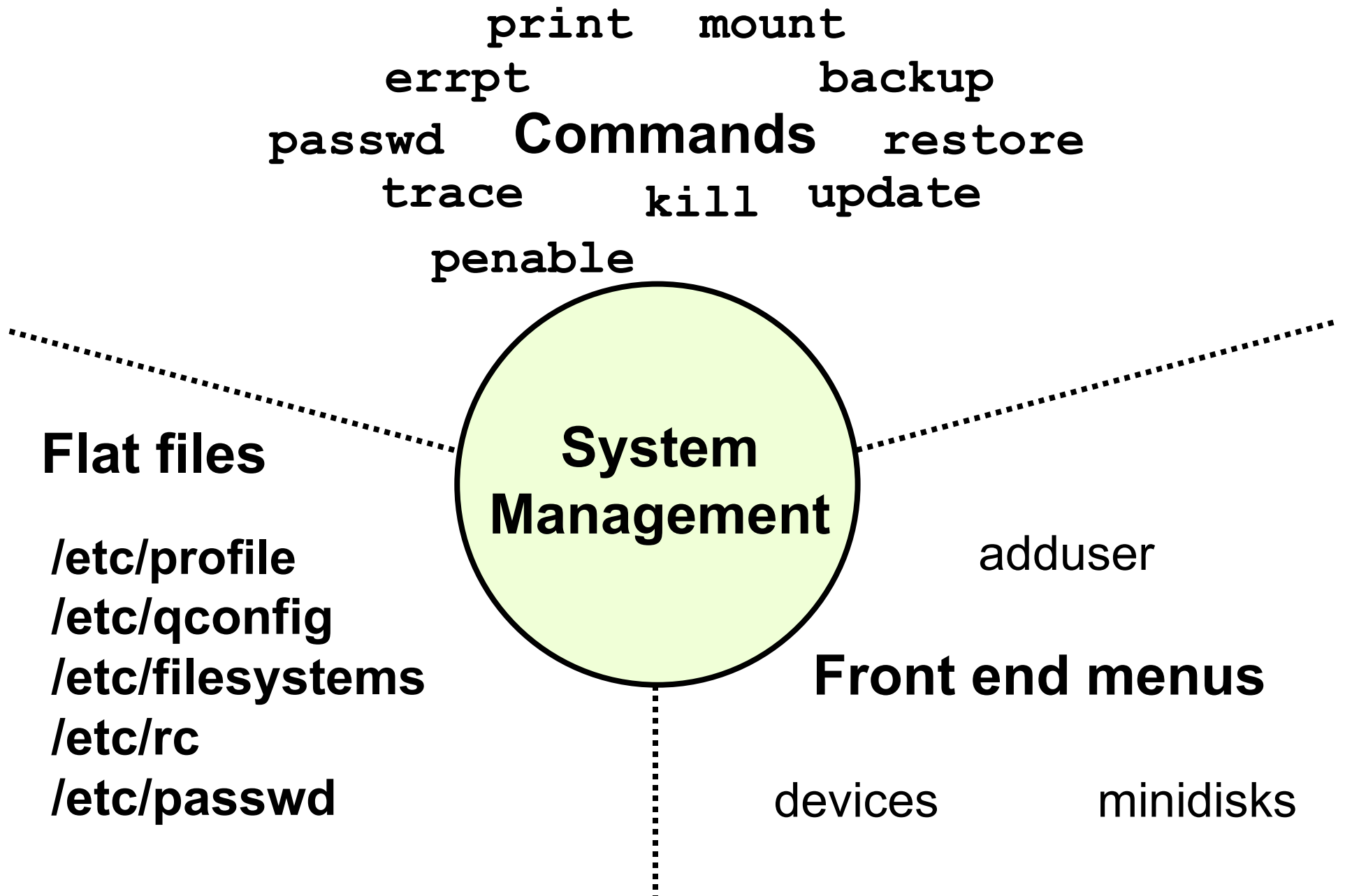
---

After completing this unit, you should be able to:

- Describe the benefits of the system management tools available with AIX version 6.1
- Discuss the functionality of SMIT
- Explain how SMIT activity is logged

# Early system administration

---



# System management objectives

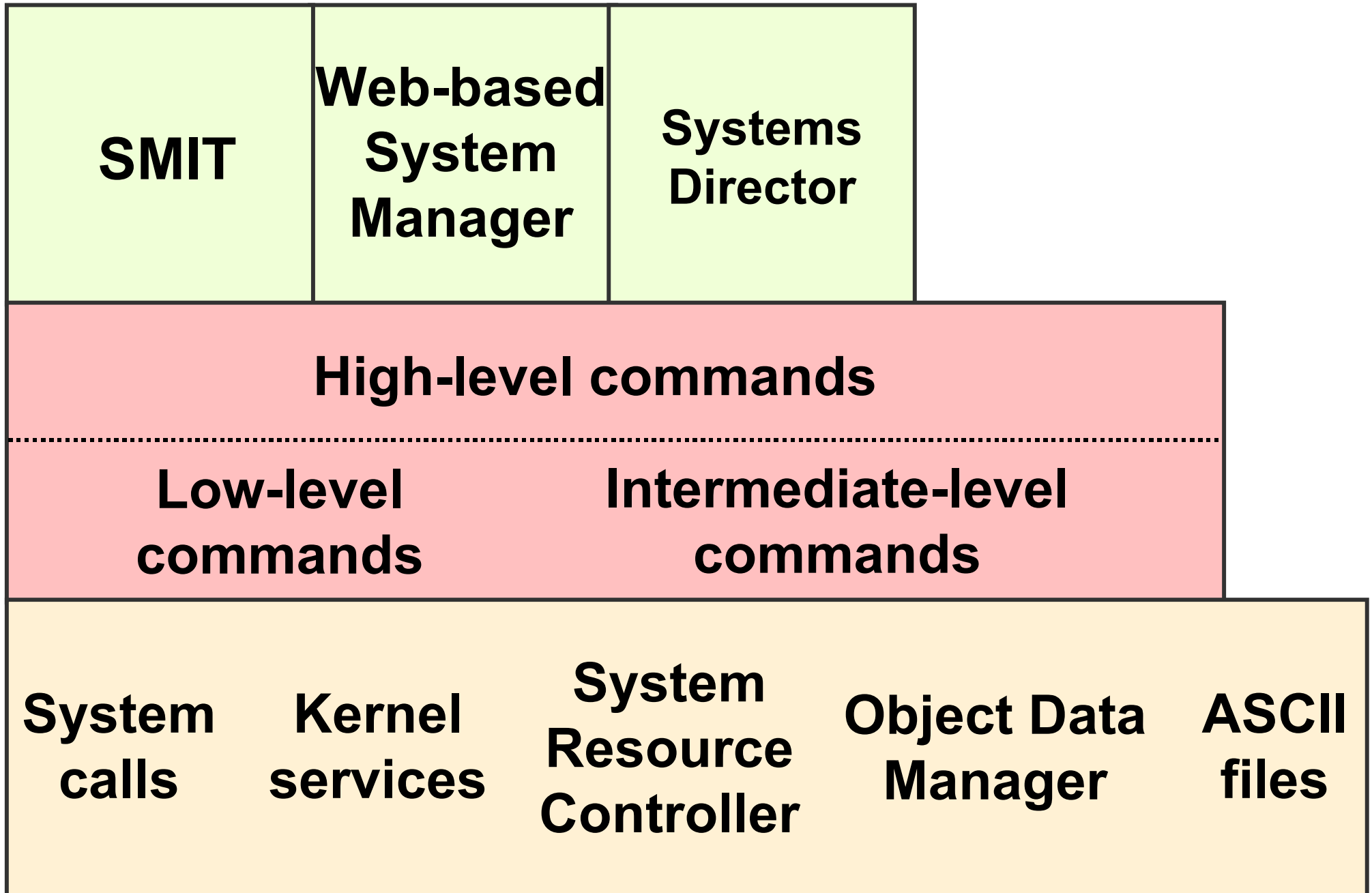
---

- Minimize time and resources spent managing systems
- Maximize reliability, performance, and productivity
- Provide remote system management solutions



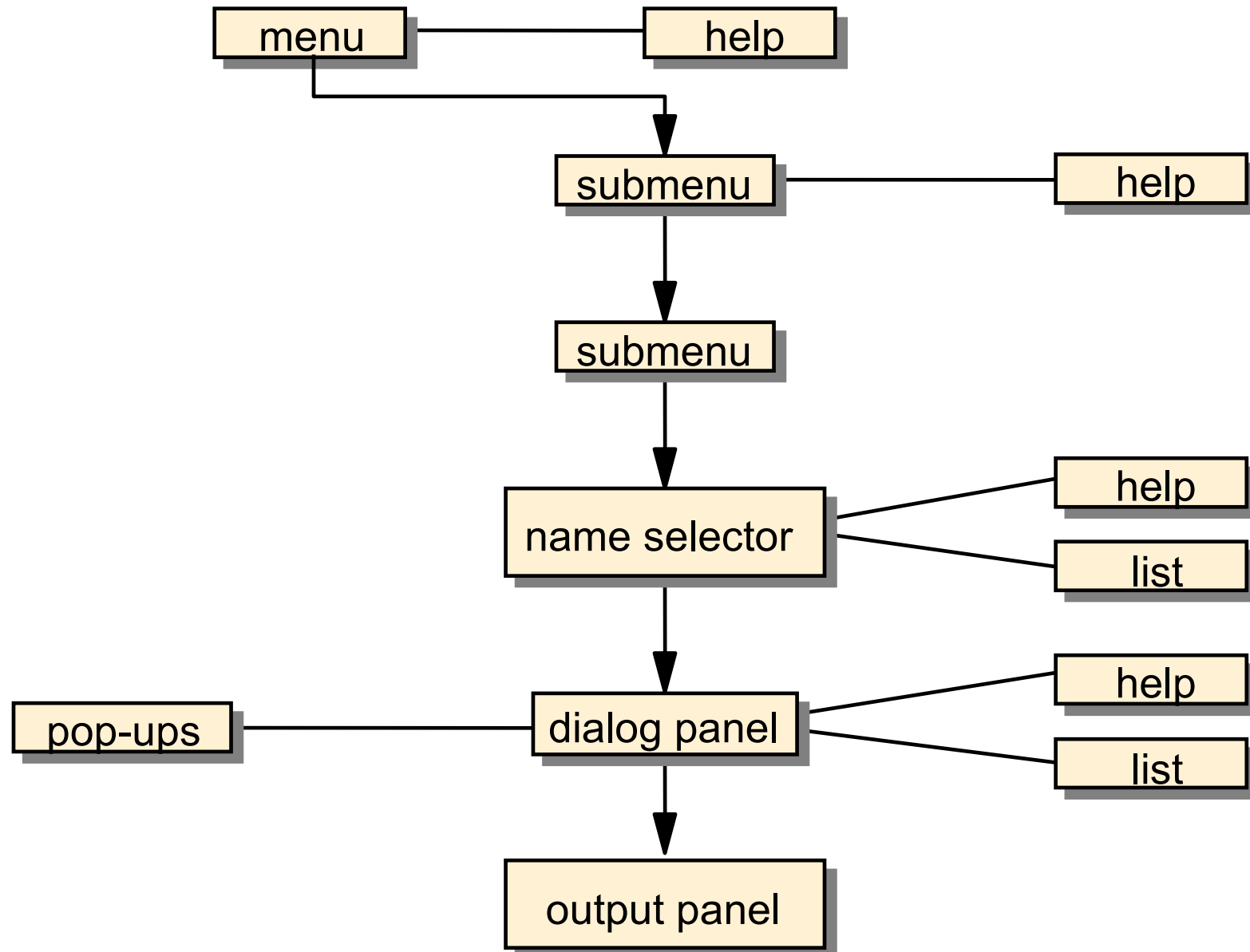
# AIX administration

---



# System Management Interface Tool (SMIT)

ASCII or AIXwindows (Motif) user interface components



# SMIT main menu (ASCII)

---

# smit

## System Management

Move cursor to desired item and press Enter.

Software Installation and Maintenance  
Software License Management  
Devices  
System Storage Management (Physical & Logical Storage)  
Security & Users  
Communications Applications and Services  
Workload Partition Administration  
Print Spooling  
Advanced Accounting  
Problem Determination  
Performance & Resource Scheduling  
System Environments  
Processes & Subsystems  
Applications  
Installation Assistant  
Cluster Systems Management  
Using SMIT (information only)

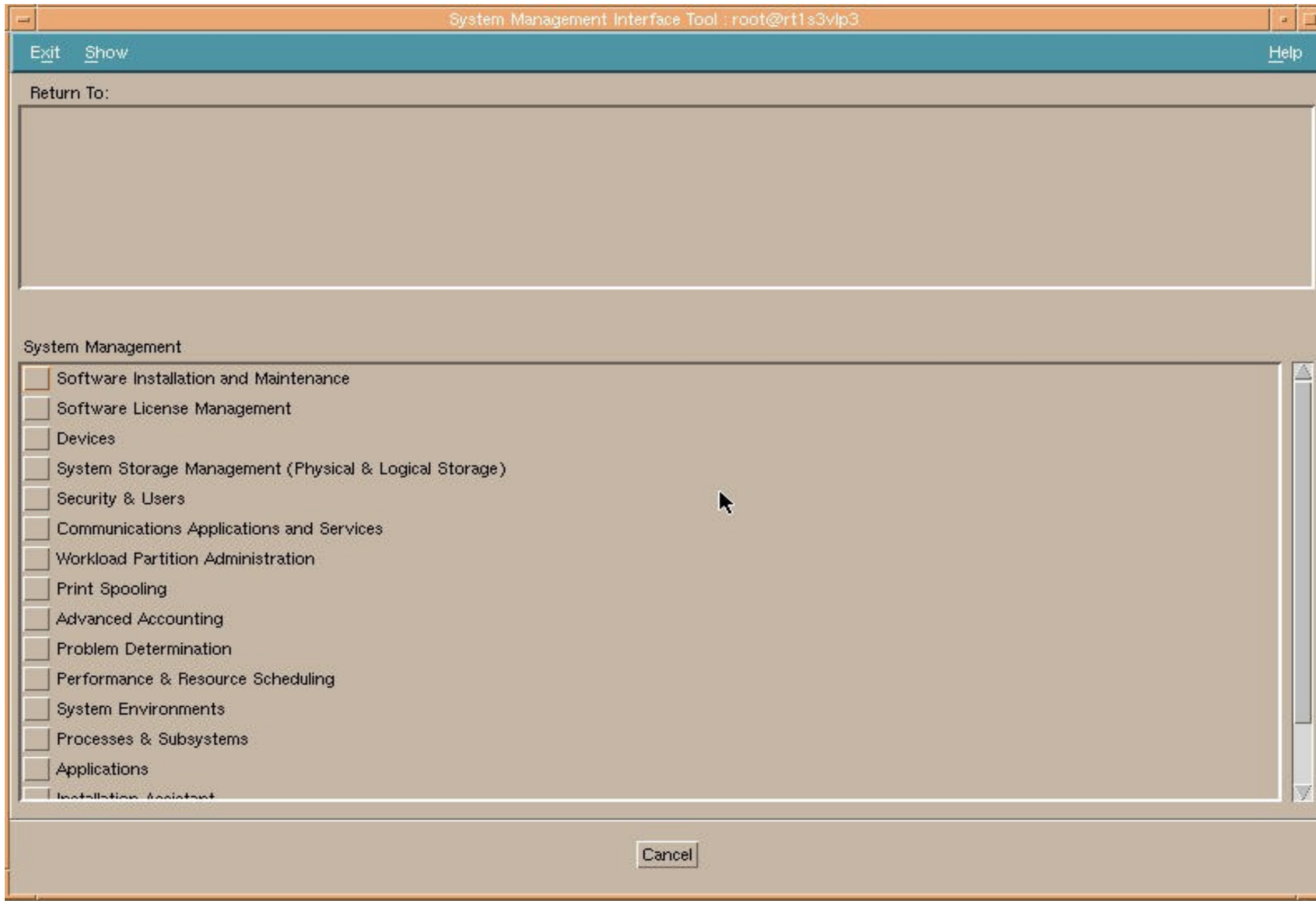
F1=Help  
F9=Shell

F2=Refresh  
F10=Exit

F3=Cancel  
Enter=Do

F8=Image

# SMIT main menu (Motif)



# Dialog screen

## Schedule a Job

Type or select values in entry fields.  
Press Enter AFTER making all desired changes.

	[Entry Fields]	
YEAR	[07]	#
MONTH	[Jun]	+
DAY (1-31)	[22]	#
* HOUR (0-23)	[ ]	#
* MINUTES (0-59)	[ ]	#
SHELL to use for job execution	Korn (ksh)	+
* COMMAND or SHELL SCRIPT (full pathname)	[ ]	

F1=Help  
F5=Reset  
F9=Shell

F2=Refresh  
F6=Command  
F10=Exit

F3=Cancel  
F7=Edit  
Enter=Do

F4=List  
F8=Image

# Output screen

Command: **OK**

stdout: yes

stderr: no

Before command completion, additional instructions may appear below.

[TOP]

UID	PID	PPID	C	STIME	TTY	TIME	CMD
root	1	0	4	20:15:04	-	1:49	/etc/init
root	1719	1	0	20:16:14	-	0:10	/etc/syncd 60
root	2003	1	0	20:16:19	-	0:00	/etc/srcmstr
root	2233	1	0	17:16:14	-	0:00	/usr/lib/errdemon
ray	3525	1	0	20:01:28	0	0:00	-ksh
root	3806	2003	0	19:16:23	-	0:00	/etc/syslogd
ray	4162	3525	6	20:53:22	0	0:04	smit
root	5355	1	0	20:16:27	-	0:12	/etc/cron
root	6649	2003	0	20:16:32	-	0:00	qdaemon
ray	7303	4162	8	20:09:45	0	0:00	ps -ef

[MORE...6]

F1=Help

F2=Refresh

F3=Cancel

F6=Command

F8=Image

F9=Shell

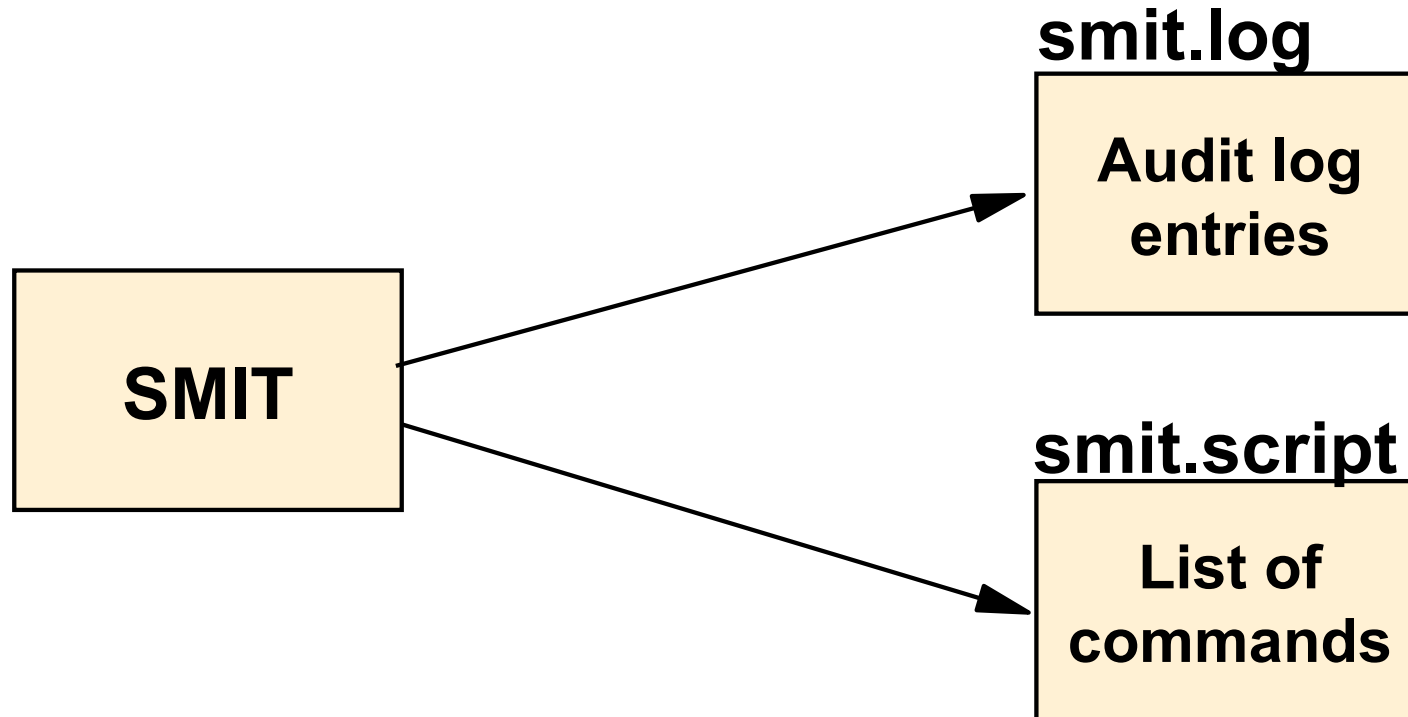
F10=Exit

/=Find

n=Find Next

# SMIT log and script files

---



- **\$HOME/smit.log**

Keeps a log of all menu and dialog screens visited, all commands executed and their output. Also records any errors during the SMIT session.

- **\$HOME/smit.script**

Shell script containing all AIX commands executed by SMIT.

# smit command options

---

- General syntax:

```
smit [-options] [ FastPath ]
```

- Invoke ASCII version:

```
# smitty
```

*or*

```
# smit -C
```

- Log (but do not actually run) commands:

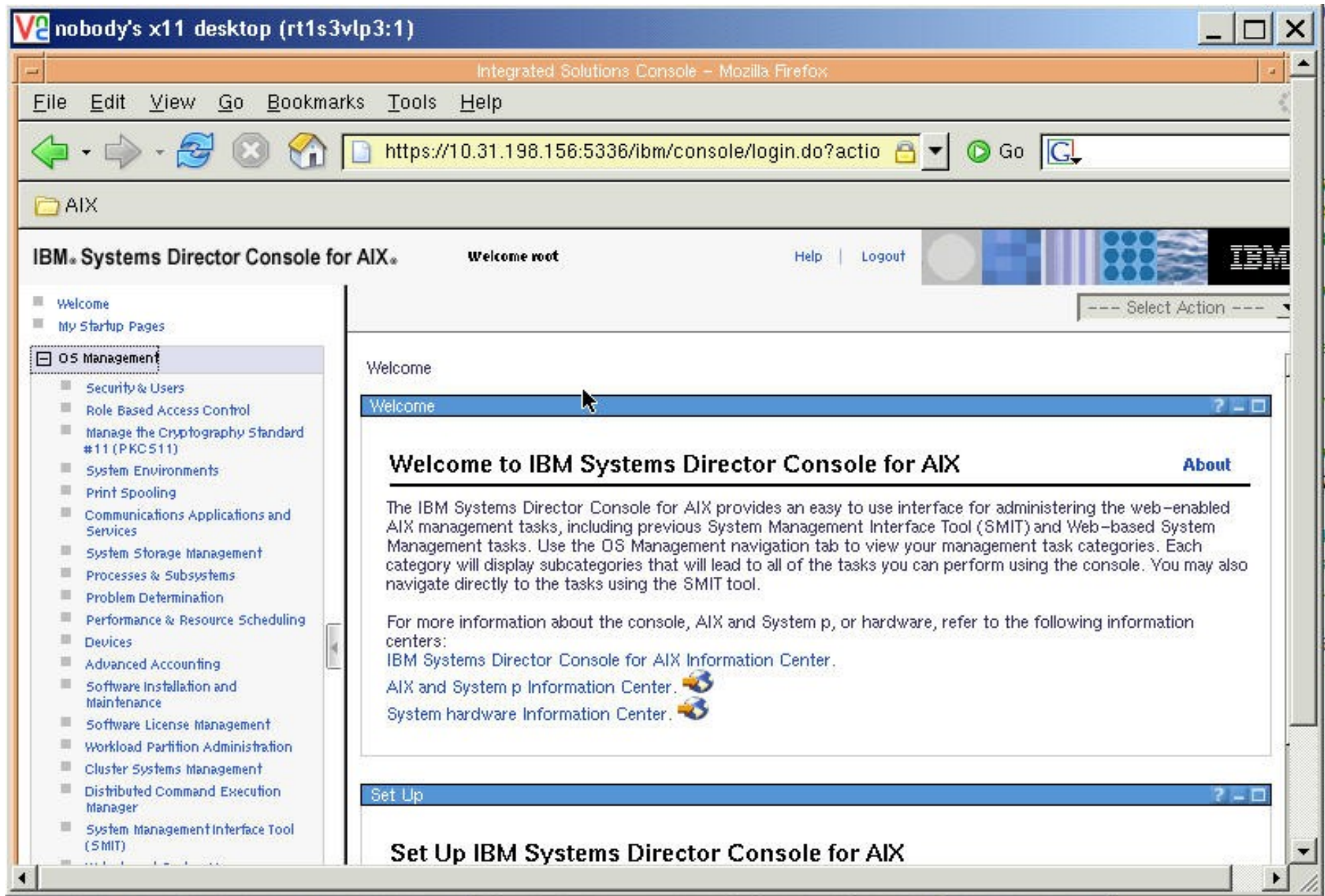
```
# smit -x
```

- Redirect the log file and script file:

```
# smit -s /u/team1/smit.script -l /u/team1/smit.log
```

```
# smit -s /dev/pts/1 -l /dev/pts/2
```

# IBM Systems Director Console for AIX



# Checkpoint

1. Specify the SMIT function keys that can be used for the following:
  - a) List the command that will be run: \_\_\_\_\_
  - b) List the screen name which can be used for the fastpath: \_\_\_\_\_
  - c) Take a screen image: \_\_\_\_\_
  - d) Break out into a shell: \_\_\_\_\_
  - e) Return to the previous menu: \_\_\_\_\_
2. Specify two ways you can request the ASCII character version of SMIT from an X-windows environment command prompt:
  - \_\_\_\_\_
  - \_\_\_\_\_

# Checkpoint solutions

---

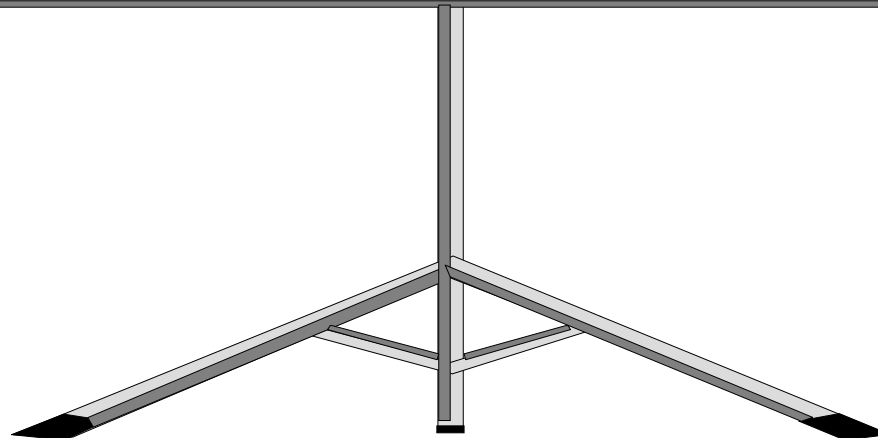
1. Specify the SMIT function keys that can be used for the following:
  - List the command that will be run: F6
  - List the screen name which can be used for the fastpath: F8
  - Take a screen image: F8
  - Break out into a shell: F9
  - Return to the previous menu: F3
2. Specify two ways you can request the ASCII character version of SMIT from an X-windows environment command prompt:
  - smitty
  - smit -C

## Exercise 2: Using SMIT

---

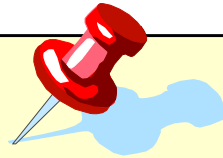


- Using SMIT with the ASCII interface
- Using SMIT with the Motif interface (optional)



# Unit summary

---



- Most system administration tasks can be completed using either the **ASCII** or **graphical** (Motif) version of SMIT
- SMIT provides **logging** of activities and generated commands
- SMIT has useful **fastpaths** for bypassing the menu structures